



# Livestock Management System

# Feedlot Management System

## Internal name: Movements



- Management Module
  - This module contains all the functionality to facilitate a feedlot manager to make the right decisions in managing his feedlot. Included amongst this information are the cattle purchases and cattle sales. The system reflects all the necessary indicators to keep a finger on the pulse of a thriving feedlot. Some of these include
    - Heifer Percentage of a batch
    - Cost per Kg of the batch
    - Slaughter (dressing) percentage of marketed animals
    - Transport Costs
    - Secondary costs such as tariffs, levies and commissions paid and received.
    - Remote reception to allow animals to be processed off site and back grounded away from the feedlot.
- Reporting Module
  - With the power of the business intelligent intelligence provided by Cognos the system is able to generate drill down reports ranging from purchased and marketed lot through to individual animal. Information regarding animal performance can be traced from supplier through to animal level too.
- Processing Module.
  - The Processing module contains the functionality to manage the reception, treatment and marketing of livestock on the feedlot. Information is kept per animal.
- Additional.
  - Electronic ear tags that work in conjunction with the traditional visual ear tag. This eliminates capturing errors and increases the quality of the data considerably. These ear tags are reusable, thereby saving money and increasing the managers ability to run a profitable feedlot.



# Feed Management System

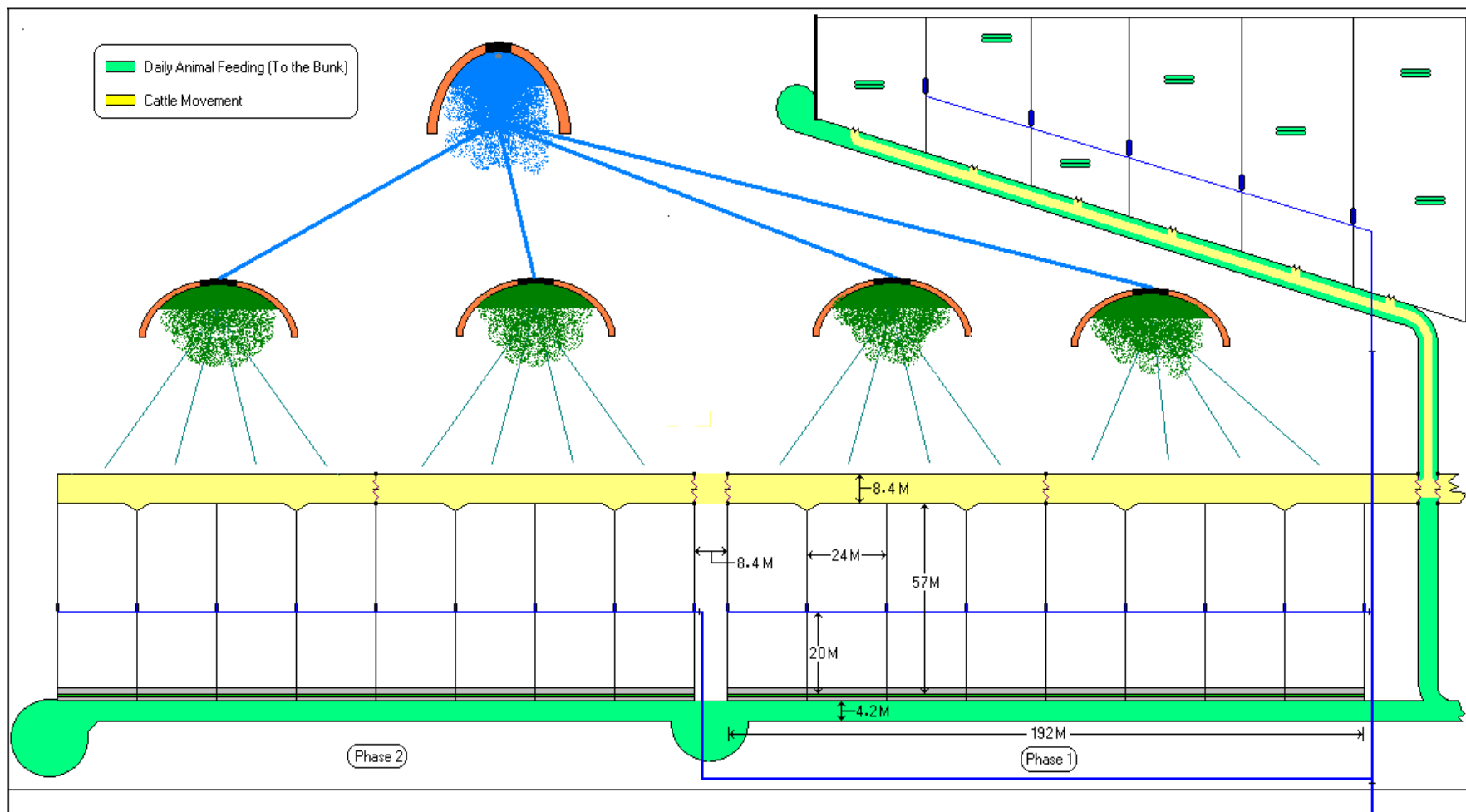
Internal name: Wagon

- Wagon management System Module
  - This is the central component of the system. Here the feedlot manager can manage his feeding methods to suite his animals. This includes the following
    - Average daily intake per animal per pen
    - Number of animals per pen
    - Ration type per pen
    - Track animal movements
    - Reporting
    - Animal balances. To ensure that none have gone missing
- Dispatcher Module
  - The feed is measured out into the feed cribs using a combination of hardware and software. The hardware on the wagon consists of
    - Communication device
    - Position locator
    - Mass measuring system
  - The software in the form of dispatcher supplies the wagon with the correct information about the feed to be delivered to the pen based on:
    - The product in the wagon
    - The number of animals in the pen
    - The percentage spit of the feed for the current schedule



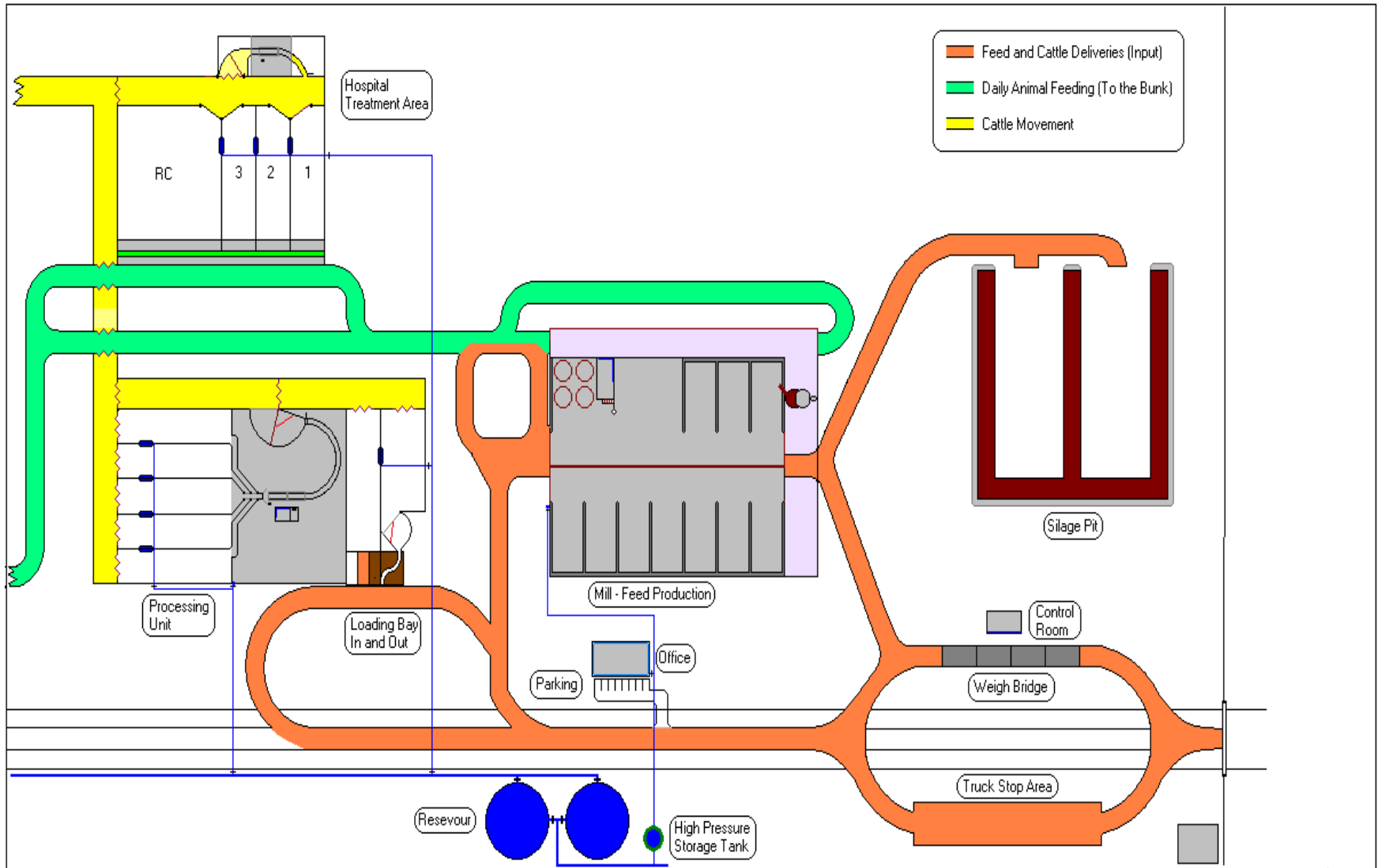
# CONSULTATION

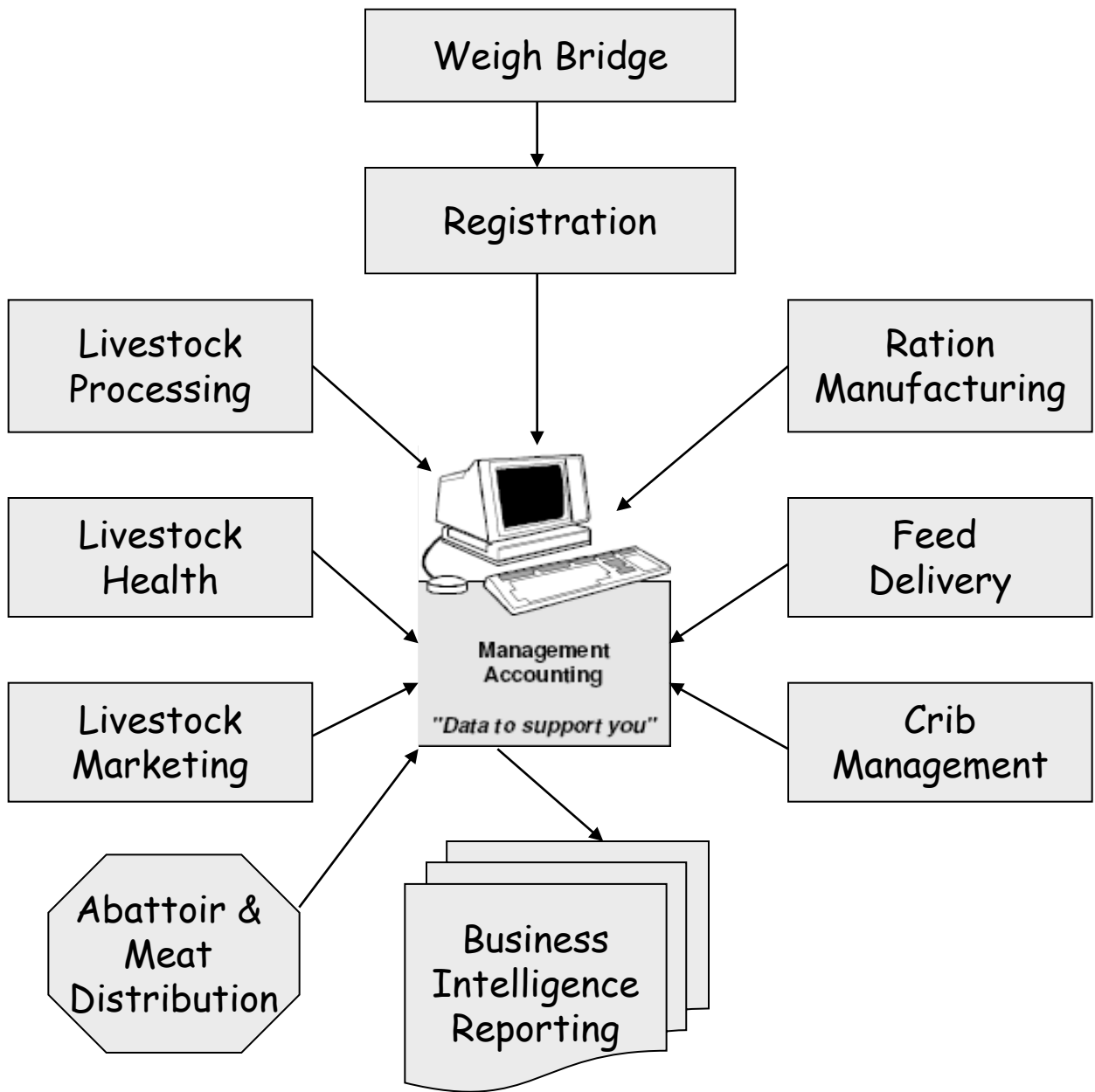
## FEEDLOT DESIGN – PEN LAYOUT



# CONSULTATION

## FEEDLOT DESIGN – PRODUCTION AREA





- Feedlot Design
- Feed systems Design
- Feed Wagon Automation
- Research and Development
- Software & Product Development
- Marketing Analysis
- Consumables
- Site Audits
- Support & Training
- Radio Frequency Identification

**Data to support your Feedlot Management**



## Weighbridge

- Weigh and record all deliveries.
- This ensures that all transactions are captured with a date and time stamp.





# Registration

- Registration of every transaction into the system
- “Good data in, results in good data out”







- Sorting & grouping of the animal, sex, type, mass & condition

# Livestock Processing



# Livestock Health

- Ongoing monitoring, identification & hospitalization of stock



# Marketing

- Effective classification, marketing & resulting sale of livestock





- Monitoring of feed manufacture

**Manufacturing**





# Feed Delivery

- Constant monitoring of all feed delivery
- Routes, capacity and delivery data





- Transponder readers interact with wagon delivery to monitor feed use & waste

## Crib Management

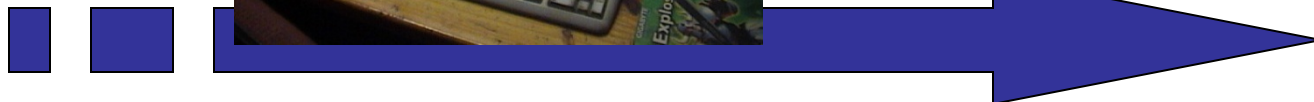




## Management Accounting

*"Data to support you"*

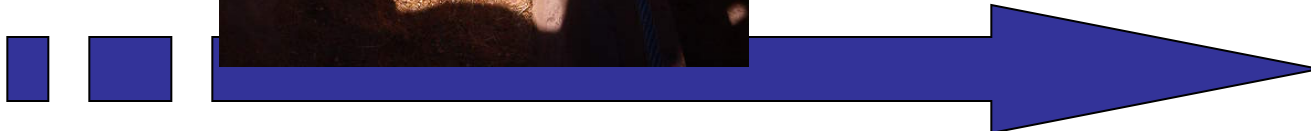
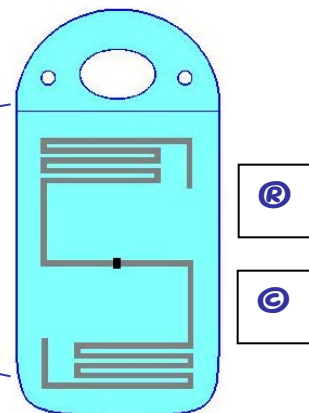
- Management interaction
- Custom fields
- Modular system to suit your needs





## Tagging & Tracking

- RFID
- Radio Frequency IDentification.
- TRACEABILITY

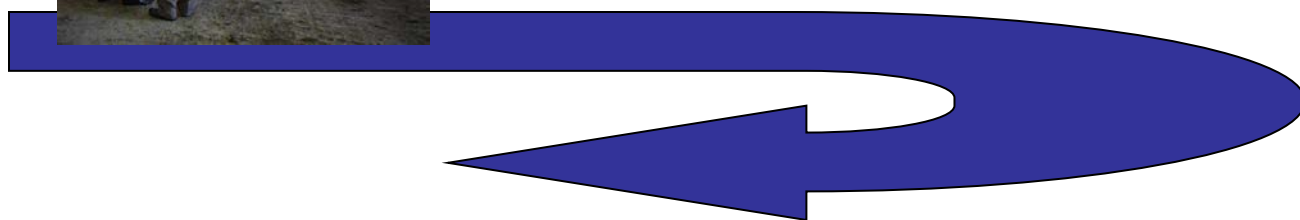






- **Service Support**
- **Consultancy on call**
- **Training Programs**

• **The complete solution for your feedlot**



# Beeftech Mill

Internal name: Mill



- Mill manufacturing Module
  - A complete but uncomplicated feed mixing system that allows well mixed rations to be produced for the feedlot. The system is simple enough for most marginally skilled labourers to operate but has sufficient control in it to alert the manager should anything take place that will put the wellbeing of the animals in danger.
  - Micro mixer control allowing the manufacturing of pre-mixes used in the final manufacturing process.
  - Interaction with the main Feedlot management system

# Beeftech Weighbridge.

Internal name: Weighbridge.



- **Manager Module**

- This is where the user logs into before starting the bridge module. The only additional functionality in this module is the ability to export the data to a CSV file for analysis and use outside of the system. This will be extended to manager the auto registered information in the next release.

- **Bridge Module**

- This controls all weighing functions of the system. Again the user interface is a single screen to aid partially skilled worker in using the system correctly. Functions:
  - » All weighing transaction require 2 passes over the weighbridge
  - » A compact till slip style mass report is generated
  - » A view of all history transactions are available